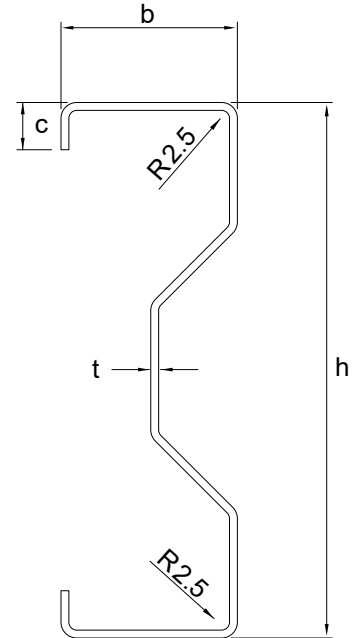
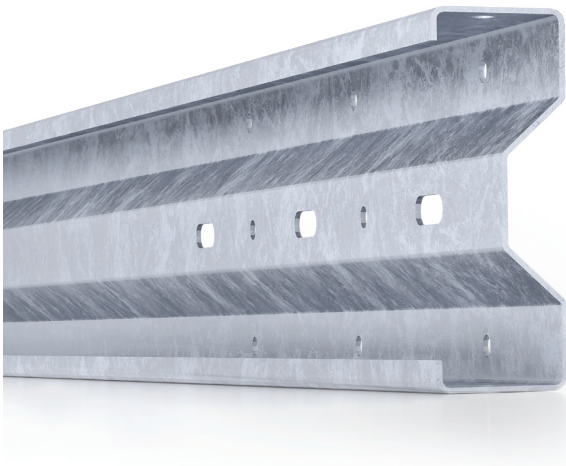


# SIGMA PROFILES



Section Type	h (mm)	b (mm)	c (mm)	h <sub>c</sub> (mm)	h <sub>e</sub> (mm)	t (mm)	G (kg/m)	A (cm <sup>2</sup> )	I <sub>y</sub> (cm <sup>4</sup> )	W <sub>y</sub> (cm <sup>3</sup> )	I <sub>z</sub> (cm <sup>4</sup> )	W <sub>z</sub> (cm <sup>3</sup> )
S 200	200	65	20	100	36	4,00	11,57	14,64	814,7	83,13	49,22	13,51
						3,00	8,85	11,19	633,3	64,29	40,02	10,76
						2,50	7,45	9,38	535,3	54,21	34,55	9,20
						2,00	6,01	7,53	433,2	43,76	28,53	7,52
						1,50	4,54	5,64	326,8	32,93	21,92	5,72
S 170	170	60	15	70	36	4,00	10,00	12,66	502,4	60,53	35,91	10,53
						3,00	7,67	9,71	392,9	47,06	29,43	8,44
						2,50	6,46	8,15	333,1	39,77	25,50	7,24
						2,00	5,22	6,55	270,3	32,18	21,12	5,93
						1,50	3,96	4,94	204,3	24,25	16,27	4,52
S 140	140	60	15	40	34	4,00	9,05	11,47	313,5	46,11	34,92	10,21
						3,00	6,97	8,82	246,3	35,91	28,69	8,21
						2,50	5,88	7,41	209,2	30,43	24,89	7,05
						2,00	4,75	5,96	170,1	24,66	20,64	5,79
						1,50	3,60	4,48	128,7	18,61	15,92	4,42

The drawings in this brochure are just examples and show some real possibilities of production combinations, we invite you to inquire about any specific requests.

The values indicated in the table are nominal according to the drawings of the profile and vary according to their dimensional parameters, the actual production will be conditioned by the tolerances according to current regulations